
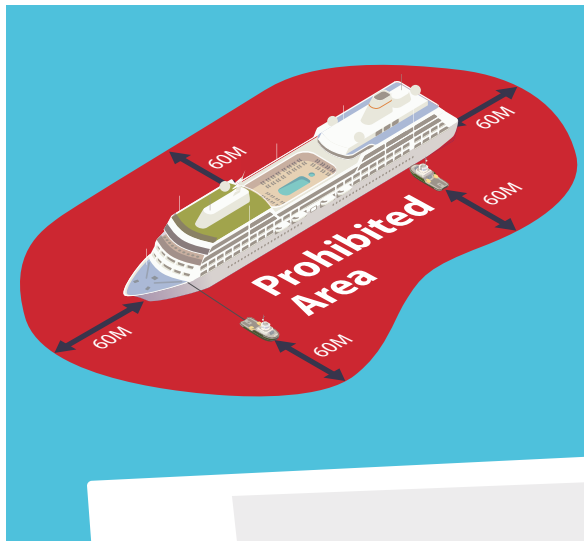


## Big ships little boats

- When sailing keep a look out to leeward under the headsail and main
- Larger ships at sea travel quickly - give yourself room; make yourself known with the VHF
- If you can't see the bridge of a ship, the Master can't see you
- AIS is a handy tool when operating in busy waterways
- If a ship is flying code flag H (right) it signifies it is under pilotage control and you must keep clear at all times 
- During berthing operations, tugs or the ships' thrusters can create dangerous wash. A 60 metre prohibited area exists around any vessel or attended tug as identified in the diagram below.)



## Organising aquatic events

If you are organising an aquatic event, please refer to the TasPorts/MAST guidance provided to Clubs or contact MAST for these details.

### MAST contact details:

Level 1  
Port Tower Building  
18 Hunter Street  
HOBART TAS 7000

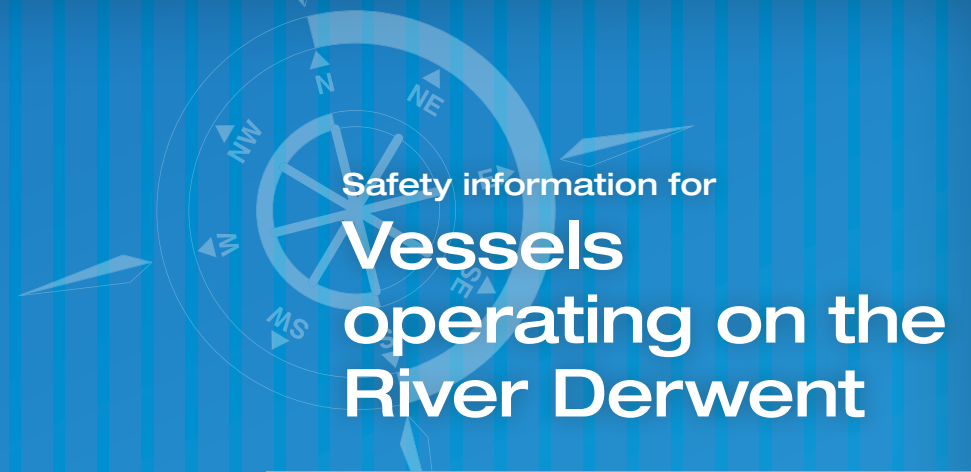
Postal Address:  
GPO Box 607  
Hobart, Tasmania, 7001

Phone: 1300 135 513  
Fax: 03 6233 5662

Web: [www.mast.tas.gov.au](http://www.mast.tas.gov.au)  
Email: [admin@mast.tas.gov.au](mailto:admin@mast.tas.gov.au)

 [fb.com/MAST.TAS](https://www.facebook.com/MAST.TAS)

 [youtube.com/user/marineandsafetytas](https://www.youtube.com/user/marineandsafetytas)



**BE BOATWISE**  
There are NO second chances

Scan to view 'Transiting the Tasman Bridge' on YouTube



J/200558

**MAST**  
MARINE and SAFETY TASMANIA  
making boating better



## GENERAL ADVICE

- Listen on VHF Ch 12
- Keep a good lookout
- Remember: Large vessels are limited in their ability to manoeuvre
- Large vessels under pilotage have **right of way**

## RESTRICTED AREA

- No anchoring allowed
- No swimming allowed
- Vessels not allowed to attach to any part of the bridge
- Vessels in this area must only navigate at right angles to the longitudinal centre line of the bridge (not east/west across the river)

## Hobart VTS Contact Details

VHF Listening Channels: 12 & 16

## 5 KNOT ZONE

No vessel is to exceed 5 knots in this area within Sullivans Cove.

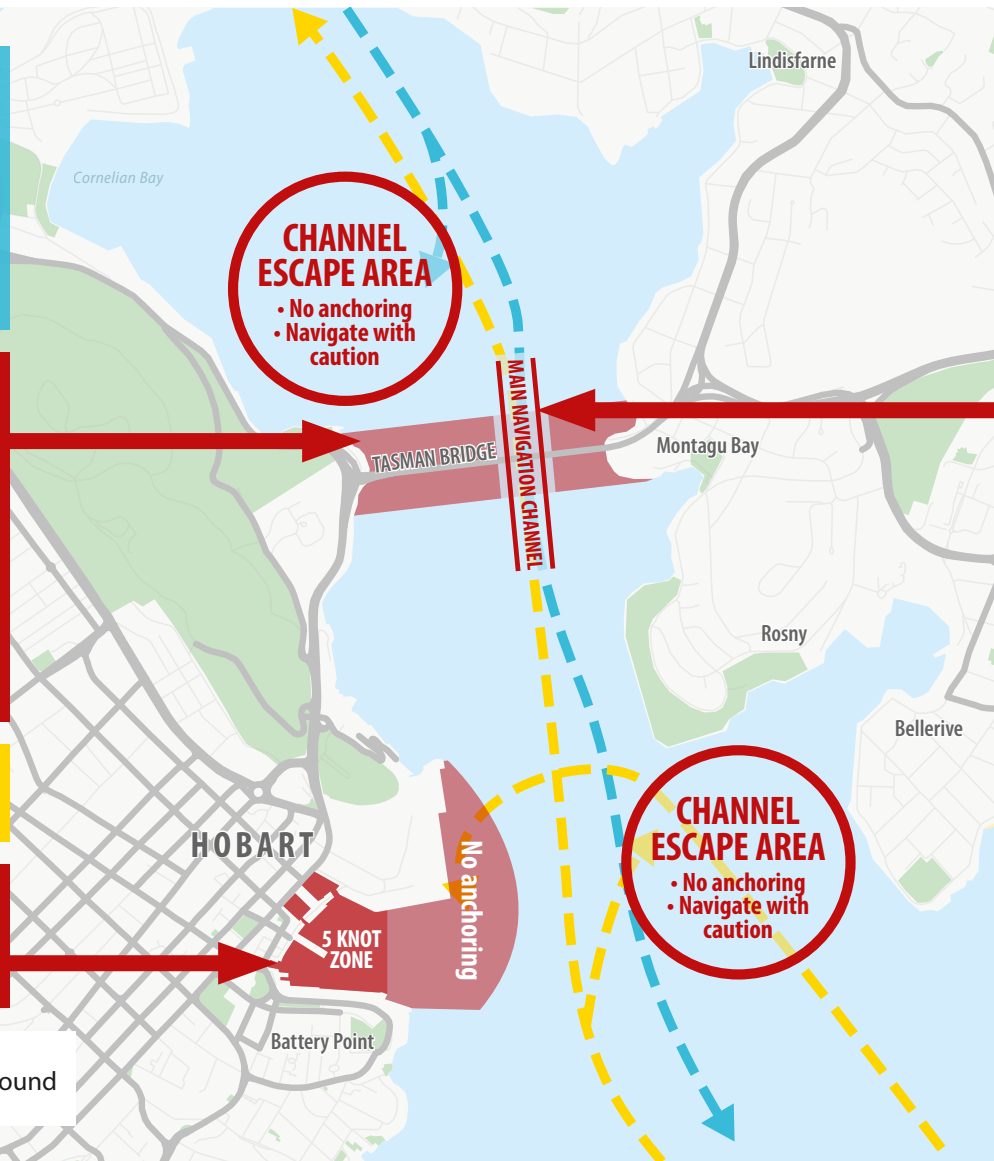
General tracks for piloted vessels



Inbound



Outbound



## MAIN NAVIGATION CHANNEL

- Large vessels under pilotage have **right of way**
- Vessels under 25m and recreational vessels **MUST NOT** pass through the main span
- Keep clear of vessels in the main navigation channel
- Tasports pilot vessel may be directed to escort vessels out of the way of a piloted vessel

## USE OF ESCORT VESSEL

A vessel under pilotage may choose to use an escort vessel to assist in clearing a path to and from the vessel's intended berth. The escort vessel will generally be a pilot boat and will display a blue flashing light when engaged in escort duties. Vessels **MUST NOT** pass between the escort vessel and the ship, as identified in the diagram below.



## TASMAN BRIDGE

Recreational vessels are **NOT** permitted to pass through the main and secondary spans.

