

CLOTHING

Due to the water temperature in Tasmania, you should always wear clothing that will keep you warm. This includes a wetsuit, wetsuit jacket, gloves and booties. Impact-resistant goggles or glasses are also recommended.



JET SKI TASMANIA

Jet Ski Tasmania is the only PWC club in the state.

The aim of the Club is to provide members with a safe environment in which to operate.

The Club's activities include short and long course rides throughout the state as well as time trials, tours and fun events.



BUYING OR SELLING A BOAT OR PWC?

1. Transfer/Disposal

Both the buyer and the seller need to lodge the transfer/disposal within 14 days.



2. Declaration

The declaration stating the vessel is not unsafe must be completed by both the buyer and the seller.



3. Sign

The transfer of registration cannot be completed without the signatures on the paperwork or confirmation on the Portal of both the buyer and seller.



4. Lodge

Complete electronic form via the MAST Portal OR lodge in person at Service Tasmania.



5. Information

Use the quick links to the MAST Portal or for further information and paper-based forms.



MAST Portal



Further Information

IS YOUR VESSEL SAFE?



Vessel Maintenance



Buoyancy



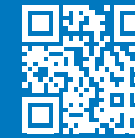
Safe Boat Registration

A Quick Guide to

Personal Water Craft



For more information on PWC and safe boating in Tasmania:



VISIT
MAST
Website



FOLLOW
MAST on
Facebook



SUBSCRIBE
to MAST on
YouTube

P 1300 135 513 E admin@mast.tas.gov.au

BE BOATWISE

Don't let the next trip be your last

MAST

MARINE and SAFETY TASMANIA
making boating better

SAFETY EQUIPMENT

LIFE JACKETS

It is compulsory TO WEAR A LIFE JACKET. Riders can wear either Level 50, 50s, 100+ in smooth and sheltered waters.

Inflatable life jackets are not permitted on PWC.

Quick Guide for Minimum Safety Equipment on PWC

(The further offshore you go, the more equipment you need)

Equipment	Smooth Waters	Sheltered Waters	Coastal Waters
Life Jacket for all on board (AS4758)	✓	✓	✓ Level 100 or greater
Fire Extinguisher (0.75kg)	✓	✓	✓
Flares	Recommended	2 x Orange 2 x Red	2 x Orange 2 x Red 2 x Parachute
OR		OR	OR
EVDS	Recommended	EVDS and GPS-EPIRB/PLB and VHF	EVDS and GPS-EPIRB/PLB and VHF and 2 Parachute flares
Tow Line	Recommended	Recommended	✓
Marine Radio (VHF) hand held	Recommended	Recommended	✓
EPIRB/PLB (GPS enabled preferred)	Recommended	Recommended	✓

Smooth water = Inland lakes, rivers.
Sheltered waters = 2nm seaward of land on North and East coast between Cape Grim & SE Cape.
Coastal waters = all other waters.

Inflatable life jackets not permitted.
 For further safety information see www.mast.tas.gov.au

MARINE and SAFETY TASMANIA
making boating better



Life Jackets



Personal Water Craft

CHECK THE WEATHER BEFORE YOU GO BOATING



Bureau of Meteorology
Weather Warnings



MetEye



**DOWNLOAD
TASMANIA'S
FREE PWC APP**



COLD WATER IMMERSION

- Water temperature in Tasmania rarely gets above 20°C
- The risk of drowning increases nearly five times if the water temperature is below 15°C
- All research points to the fact that by wearing a life jacket, your chances of survival are far greater

Water Temperature Celcius°	Loss of dexterity with no protective clothing	Exhaustion or unconsciousness	Expected time of survival
0.3-4.5	< 3 mins	15-30 mins	30-90 mins
4.5-10.0	< 5 mins	30-60 mins	1-3 hours
10.0-15.5	10-15 mins	1-2 hours	1-6 hours
15.5-21.0	30-40 mins	2-7 hours	2-40 hours
21.0-26.5	1-2 hours	2-12 hours	3 hours - indefinite

See mast.tas.gov.au – Cold Water Immersion.

USING A PWC SAFELY

To operate a PWC, you must have an endorsement on your current motor boat licence.

Hours of Operation

Personal water craft can only be operated from Sunrise to Sunset.

Freestyling

PWC (and motor boats) are not permitted to operate in a “freestyle” manner when within 200 metres of a swimmer or 200 metres of the shore if a dwelling is within 100 metres of that shoreline.

Freestyle means erratic and non-directional driving, making it difficult for others to predict the course to avoid a collision. It includes wake jumping and tight turns such as doughnuts.

Speeds and Distances

You cannot exceed a speed of 5 knots when within:

- 60 metres of the shore, a wharf, jetty or another boat
- 120 metres of a swimmer, diver (Code Flag A) or someone wading in the water
- 5 knot areas around the state

Safe Operation Sticker

SAFE OPERATION OF A PWC

**5
KNOTS**

120m

- within 60m of a wharf, jetty, ramps and moorings
- within 60m of the shoreline and other vessels
- within 120m of swimmers, divers/diving flag

- Wear an approved PFD and carry the required safety equipment.
- Freestyling is not permitted within 200m of swimmers and within 200m of the shore when there is a domestic dwelling within 100m of that shoreline.
- Attach the cut-out safety line (if provided).

IT IS COMPULSORY TO AFFIX THIS STICKER ADJACENT TO THE PWC CONTROLS

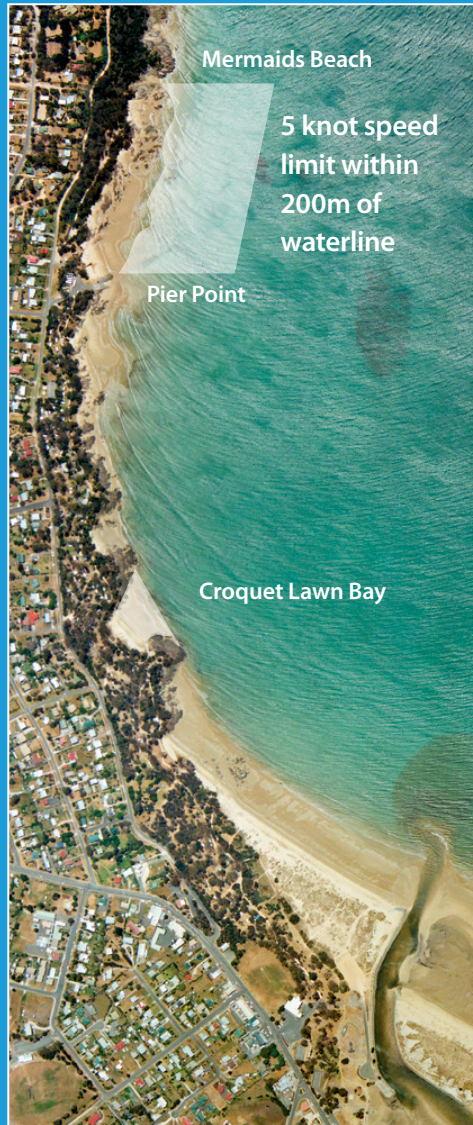
MARINE and SAFETY TASMANIA
making boating better

- A safe operation sticker must be affixed to a PWC
- No builder's plate required
- Registration numbers on a PWC must be a minimum of 75mm in height.

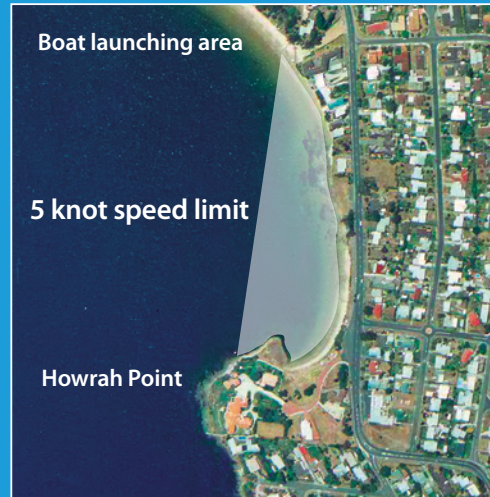
5 KNOT ZONE, PROHIBITED AREAS AND DESIGNATED SKI AREAS

Throughout Tasmania there are areas of prohibited navigation, 5 knot zones and designated ski areas. Some of the popular areas are listed below and a full list is available at www.mast.tas.gov.au

Bridport



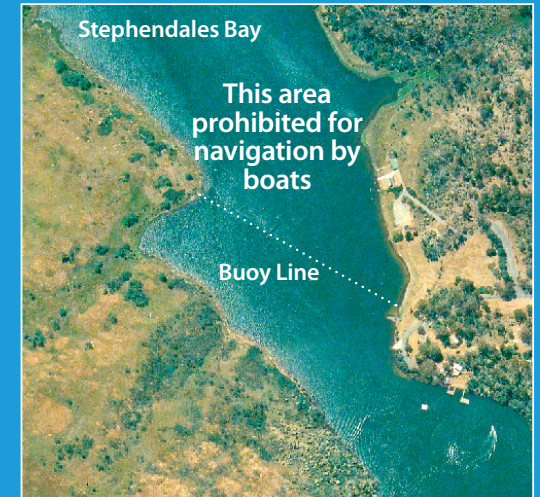
Howrah Beach



Carlton Beach



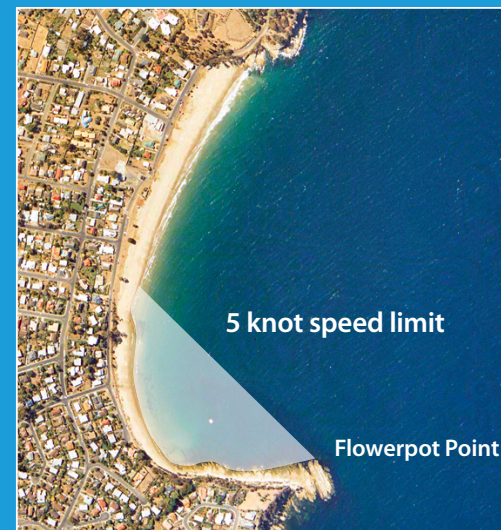
Lake Trevallyn



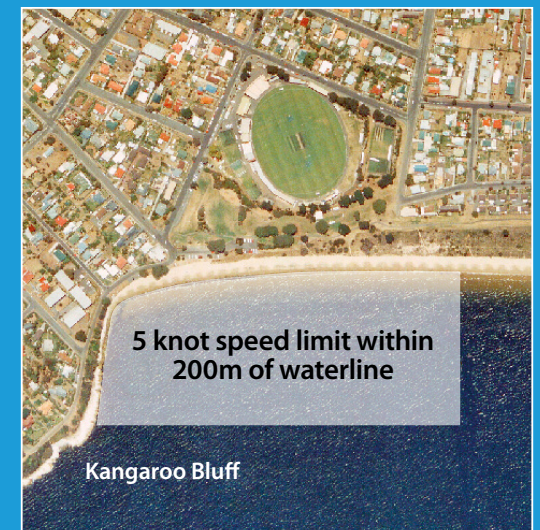
Kingston Beach



Blackmans Bay



Bellerive Beach





OPERATIONAL AREAS for vessels not used for commercial purposes

- Smooth waters
includes all inland lakes and rivers
- Sheltered waters
- Coastal waters

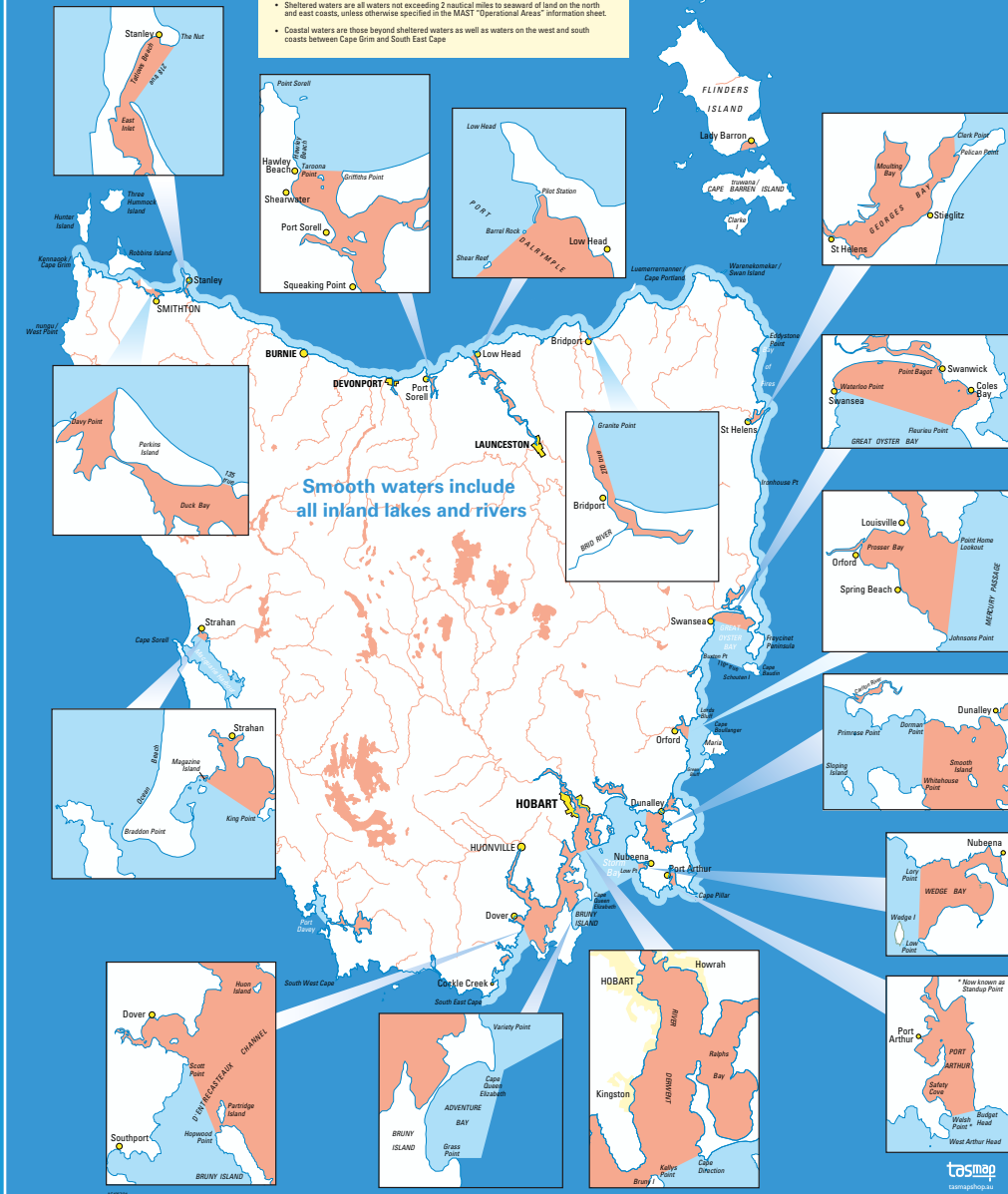
To check what safety equipment is required for your vessel in Smooth, Sheltered or Coastal Waters, see the Equipment table.

- Sheltered waters are all waters not exceeding 2 nautical miles to seaward of land on the north and east coasts unless otherwise specified in the MAST "Operational Areas" information sheet.
- Coastal waters are those beyond sheltered waters as well as waters on the west and south coasts between Cape Grim and South East Cape

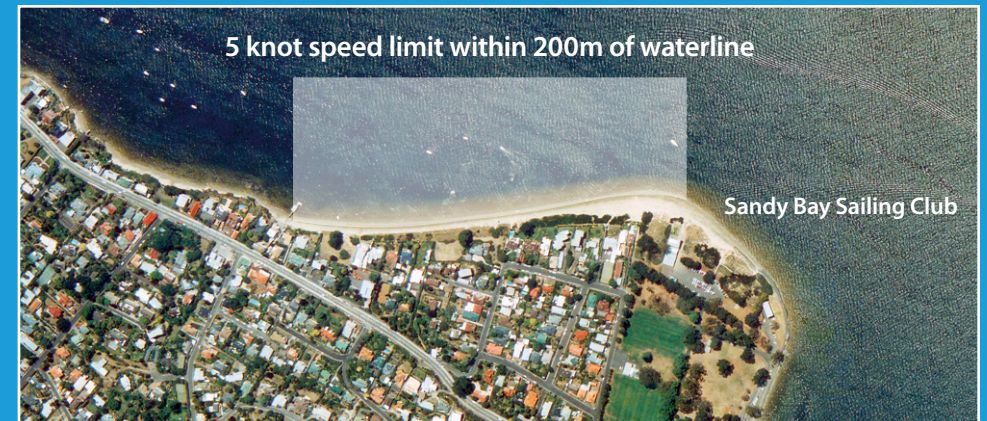
MAST

MARINE and SAFETY
TASMANIA

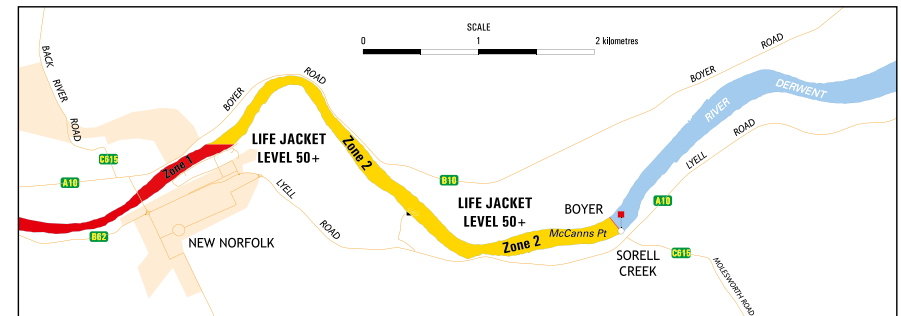
making boating better



Nutgrove Beach



New Norfolk Designated Ski Area Designated Zones Information



Zone 1

5 Knots all vessels, preferred paddling area

Zone 2

5 Knots all vessels unless towing a skier, biscuit, etc.